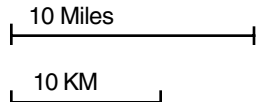


Mag 10.00
Thu Aug 30 01:22 2007

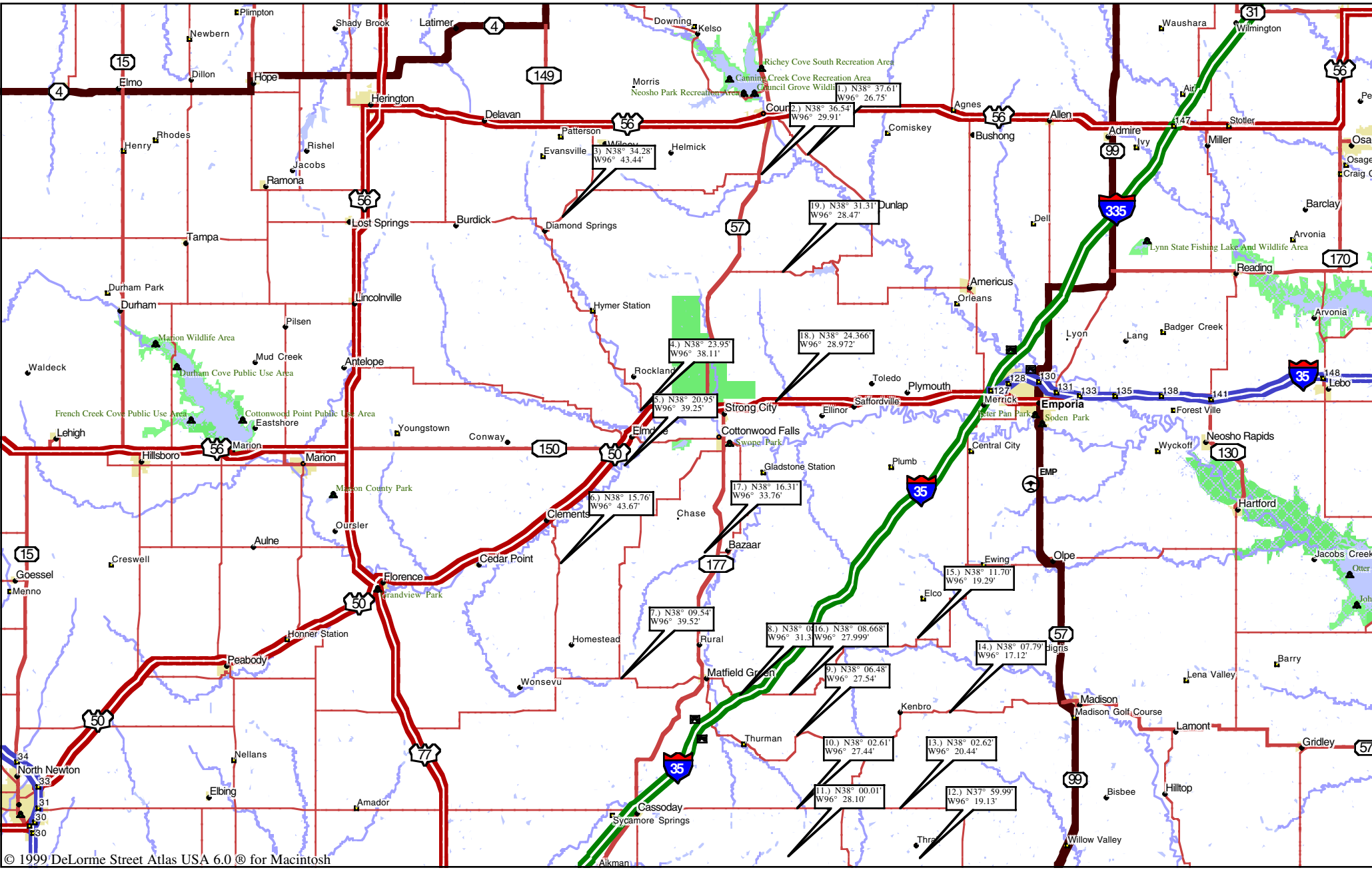
Scale 1:500,000 (at center)



Major Connector
State Route

Primary State Route
Interstate/Limited Access

Toll Highway
US Highway



Mag 12.00
Thu Aug 30 01:25 2007

Scale 1:125,000 (at center)

2 Miles

2 KM

Local Road

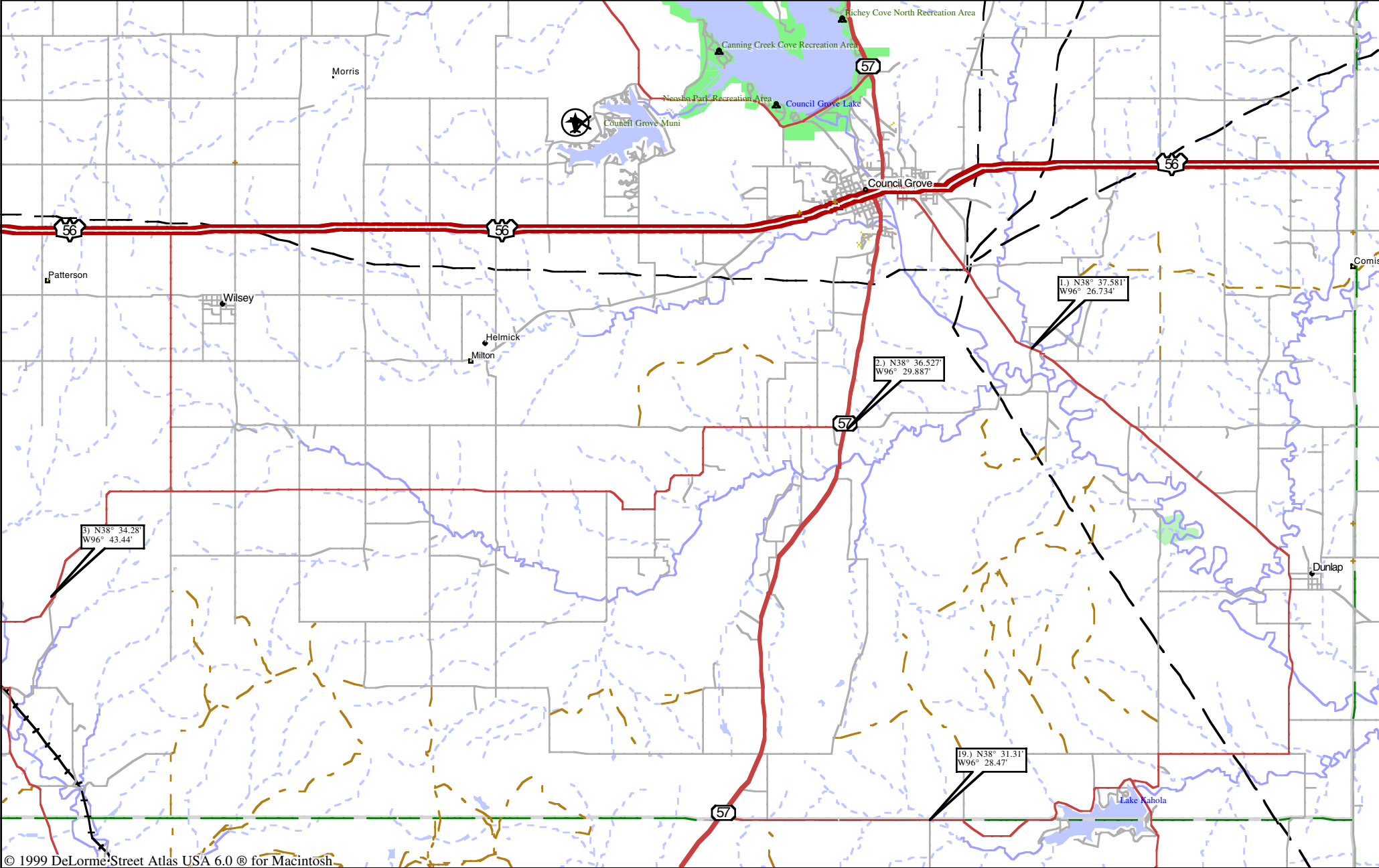
Major Connector

State Route

Trail

US Highway

Utility/Pipe



Mag 12.00
Thu Aug 30 01:25 2007

Scale 1:125,000 (at center)

2 Miles

2 KM

Local Road

Major Connector

State Route

Trail

US Highway

Railroad

S) N38° 34.28'
W96° 43.44'

Burdick

Diamond Springs

Hymer Station

Rockland

57

57

Mag 12.00
Thu Aug 30 01:26 2007

Scale 1:125,000 (at center)

2 Miles

2 KM

Local Road

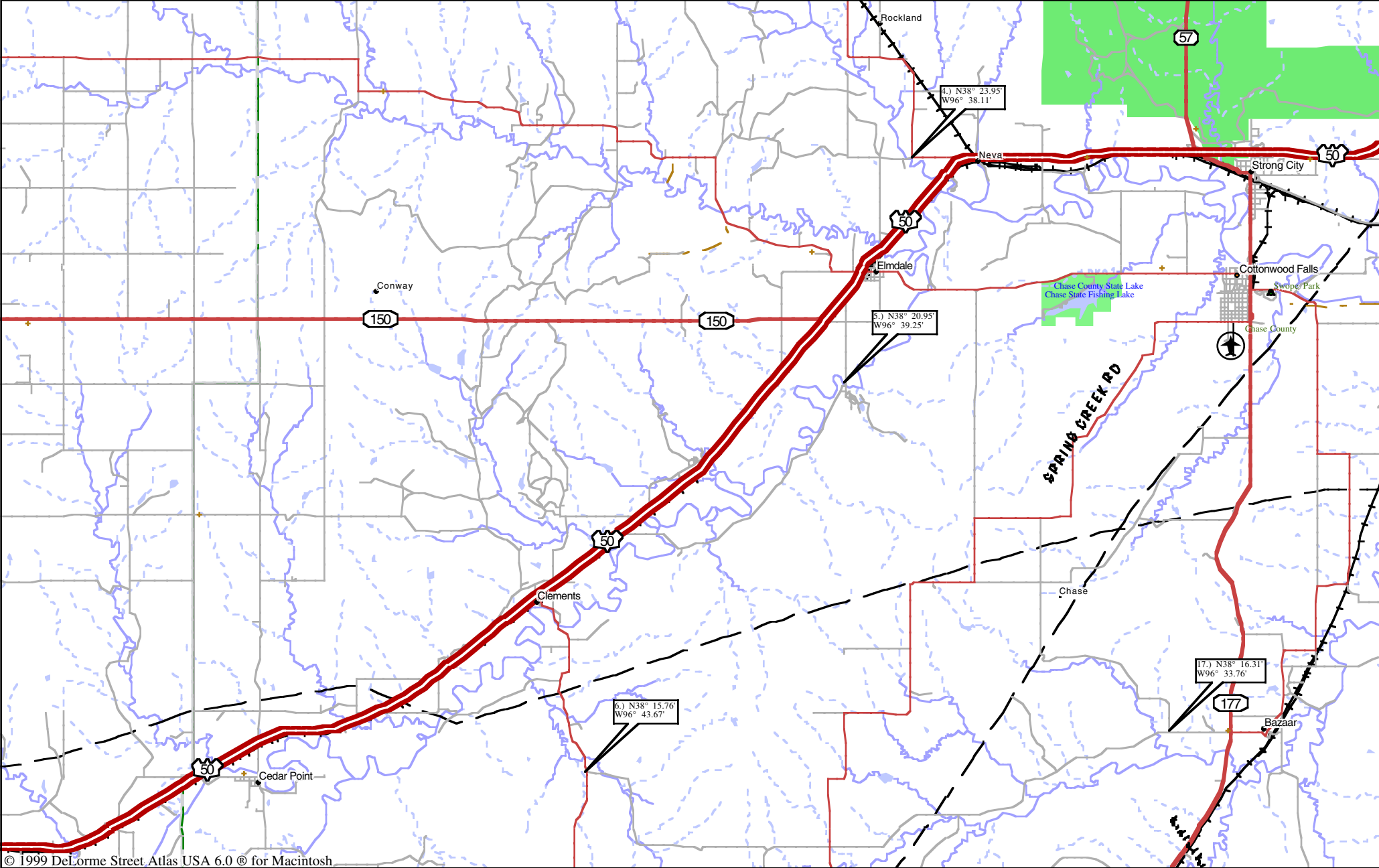
Major Connector

State Route

Trail

US Highway

Utility/Pipe



Mag 12.00
Thu Aug 30 01:27 2007

Scale 1:125,000 (at center)

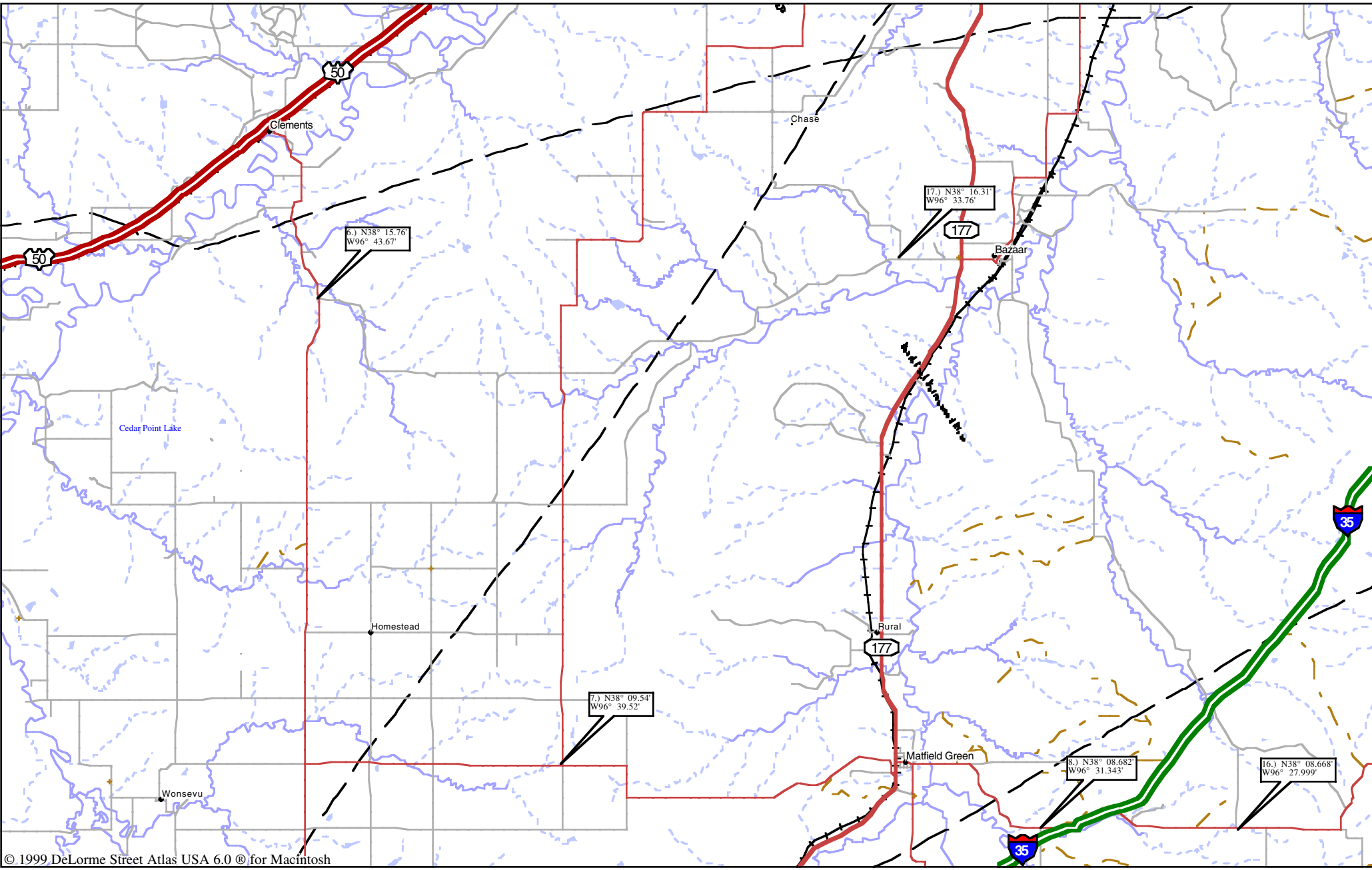
2 Miles

2 KM

Local Road
Major Connector

State Route
Trail

Toll Highway
US Highway



Mag 12.00
Thu Aug 30 01:28 2007

Scale 1:125,000 (at center)

2 Miles

2 KM

Local Road

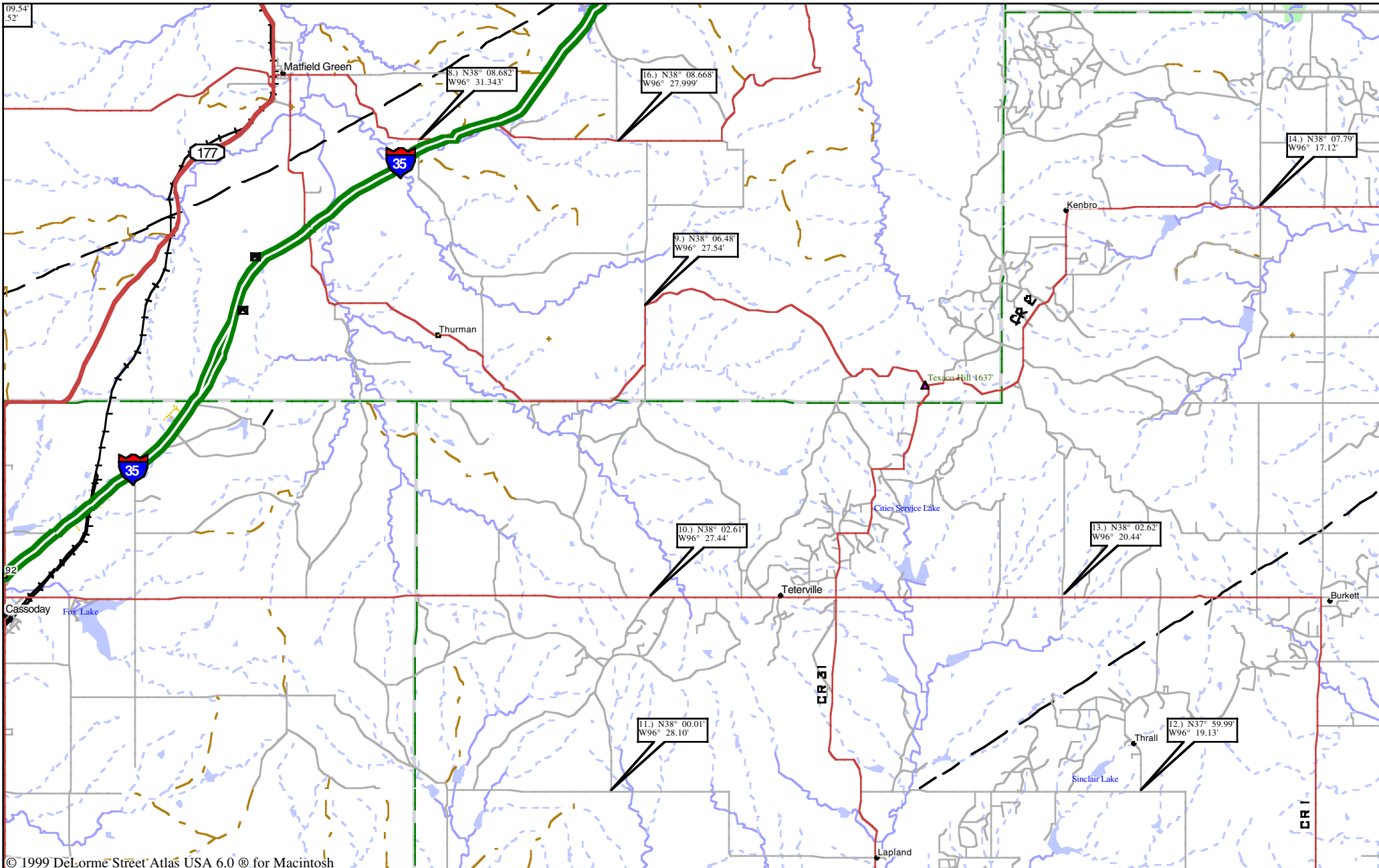
Major Connector

State Route

Trail

Toll Highway

Rest Area with facilities



Mag 12.00
Thu Aug 30 01:31 2007

Scale 1:125,000 (at center)

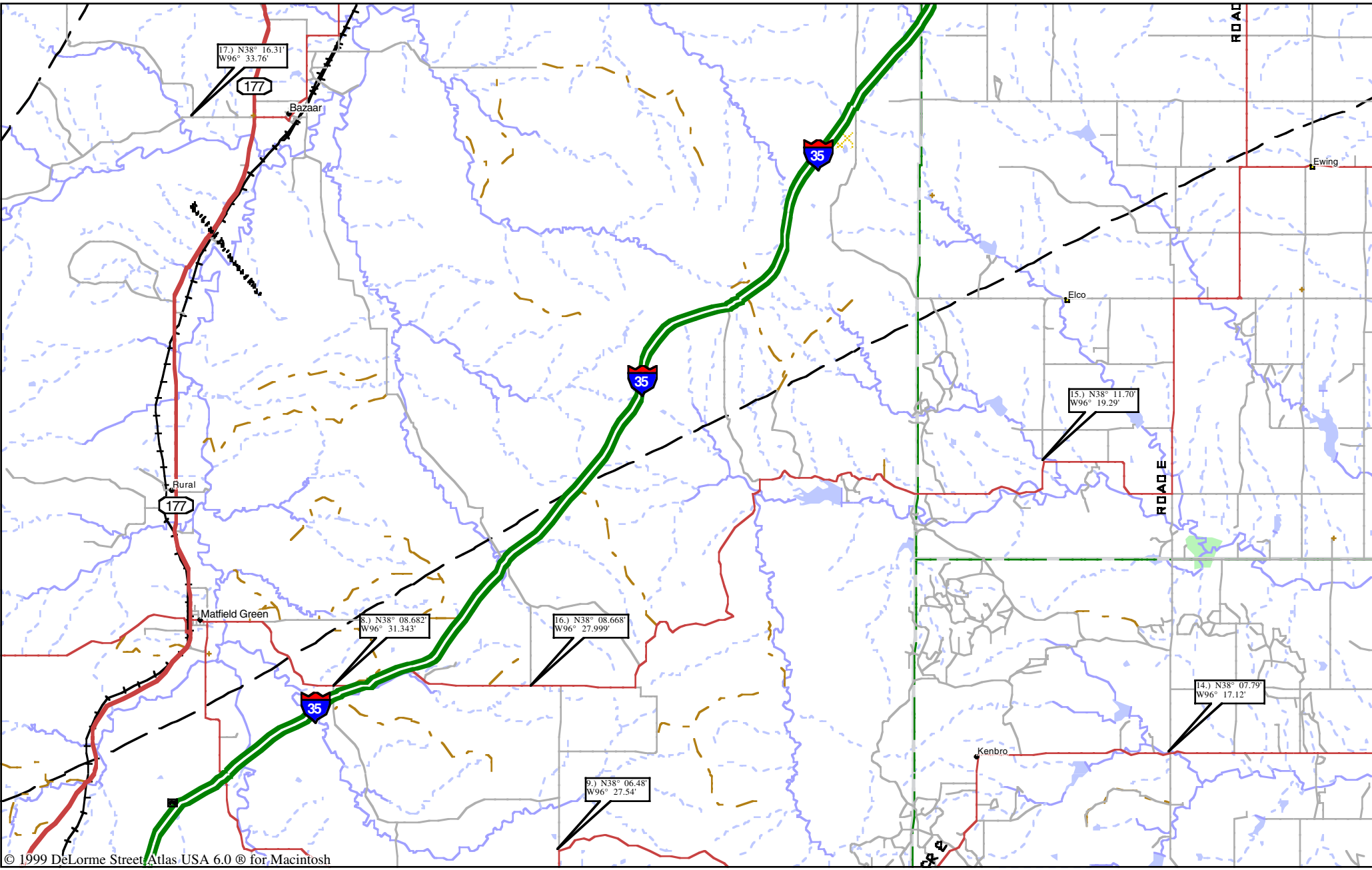
2 Miles

2 KM

Local Road
Major Connector

State Route
Trail

Toll Highway
Rest Area with facilities



Mag 12.00
Thu Aug 30 01:32 2007

Scale 1:125,000 (at center)

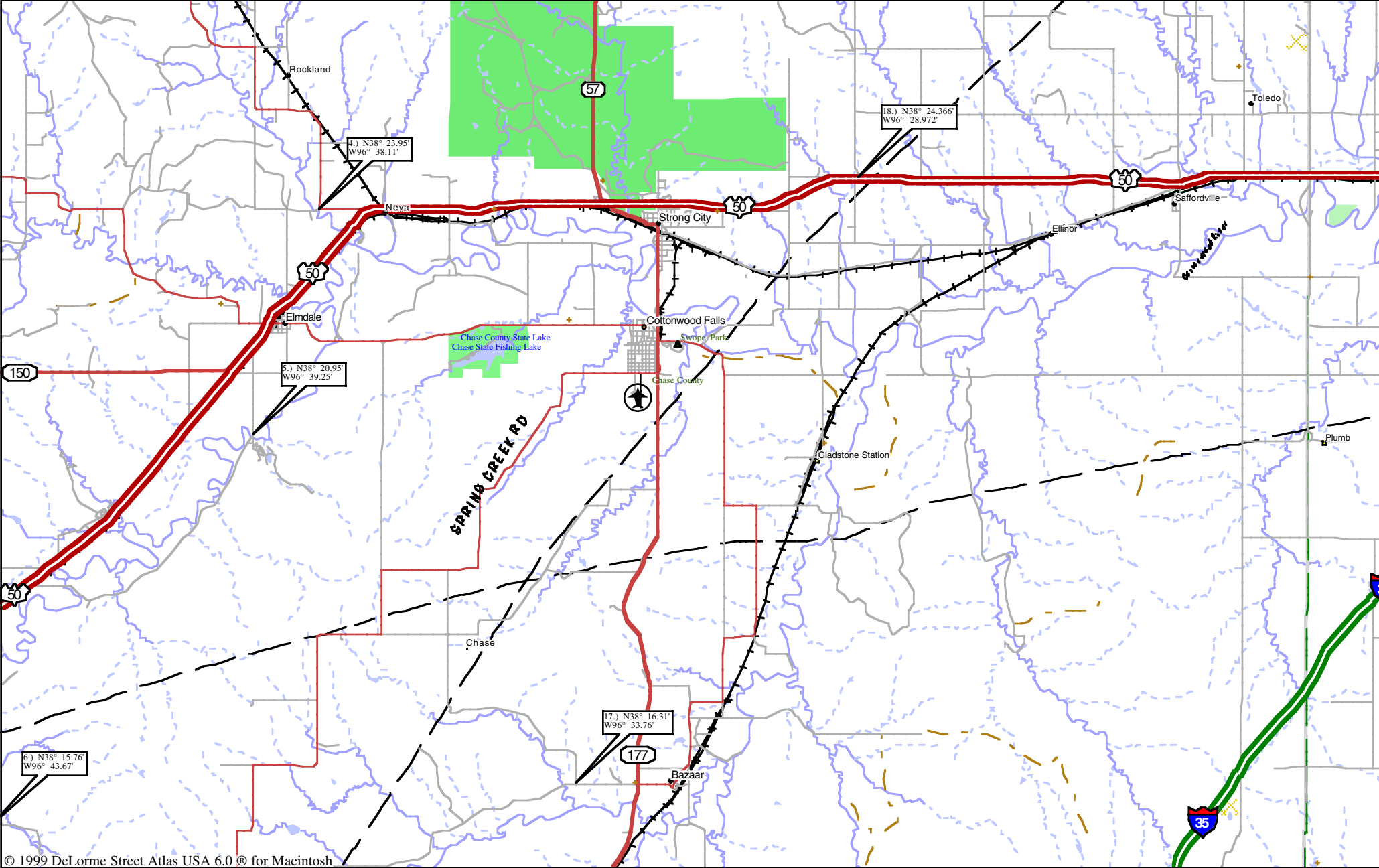
2 Miles

2 KM

Local Road
Major Connector

State Route
Trail

Toll Highway
US Highway



Mag 12.00
Thu Aug 30 01:32 2007

Scale 1:125,000 (at center)

2 Miles

2 KM

Local Road

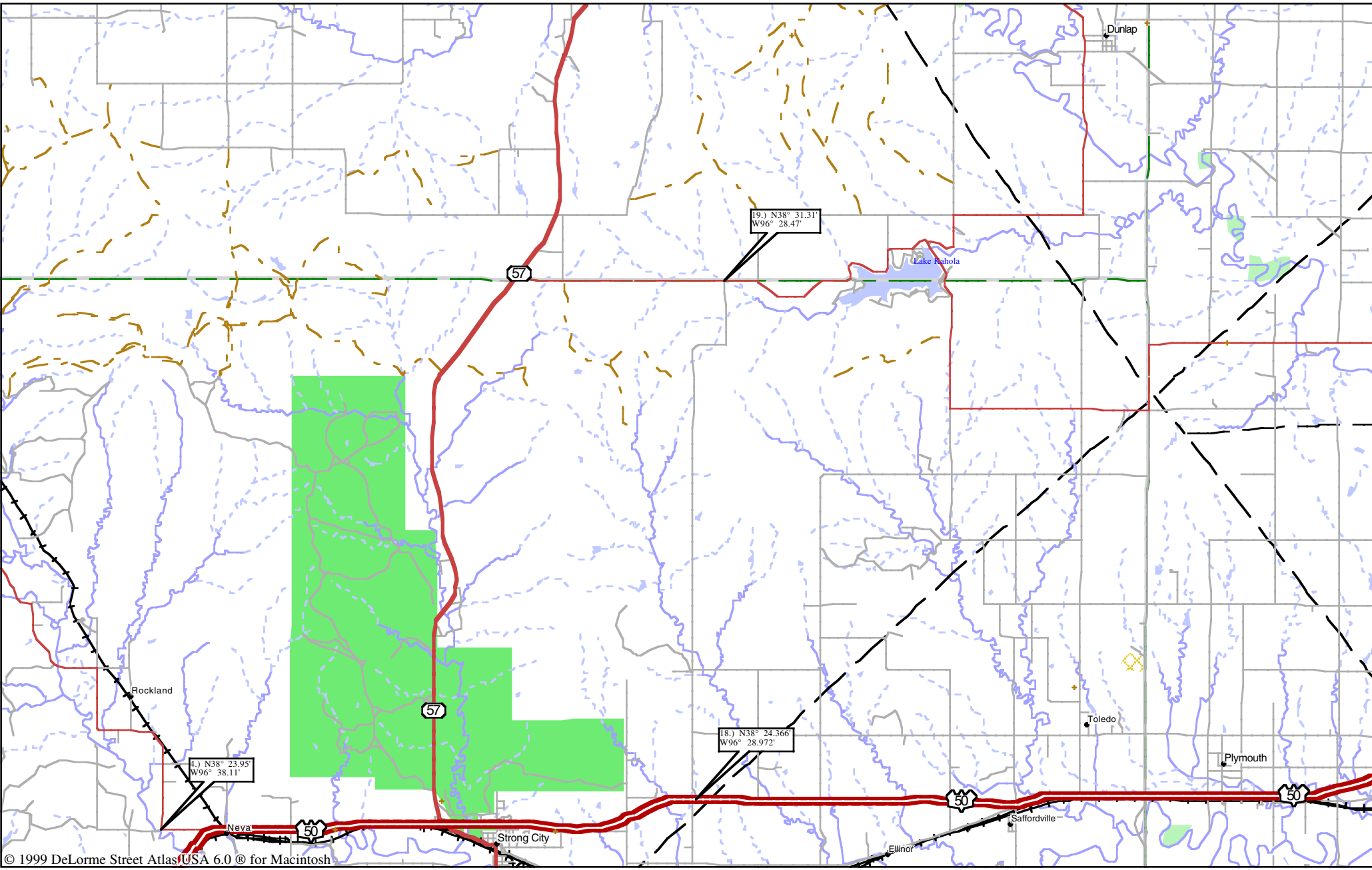
Major Connector

State Route

Trail

US Highway

Utility/Pipe



Mag 12.00
Thu Aug 30 01:34 2007

Scale 1:125,000 (at center)

2 Miles

2 KM

Local Road
Major Connector

State Route
Trail

US Highway
Utility/Pipe

